

# 5842

20 Amp Duplex Receptacle/Outlet, Commercial Grade, Dual Voltage, Self-Grounding

Duplex Receptacle Outlet, Commercial Specification Grade, Dual Voltage, Indented Face, 20 Amp, 125/250 Volt, Side Wire, NEMA 5-20R\_6-20R, 2-Pole, 3-Wire, Self-Grounding - Brown

**ROHS Compliant :** Yes

Leviton's line of Heavy-Duty Specification Grade receptacles are designed and manufactured to withstand the most demanding environments. Available in a wide variety of configurations, including isolated ground, tamper-resistant, etc., these Commercial Grade devices are the electrical contractor's choice for use in hotels, schools, hospitals and commercial office buildings.



**Color :**  Brown

**UPC Code :** 078477251003

**Country Of Origin :** Mexico

**NEMA :**  5-20R\_6-20R

**Available Colors :**

  
Ivory

## Technical Information

### AC Horsepower Ratings

**At Rated Voltage :** 1 HP 125V  
/ 2 HP 250V

### Electrical Specifications

**Amperage :** 20 A

**Current Limiting :** Full Rated Current

**Dielectric Voltage :**  
Withstands 2000V per UL498

**Grounding :** Self-Grounding

**Pole :** 2

**Temperature Rise :** Max 30C  
after 100 cycles OL at 150  
percent rated current

**Voltage :** 125/250 VAC

**Wire :** 3

### Environmental Specifications

**Flammability :** Rated V-2 per  
UL 94

**Operating Temperature :** -40°  
C to 60°C

### Material Specifications

**Body Material :** Nylon

**Clamp Nuts :** Zinc-Plated Steel

**Color :** Brown

**Face Material :** Nylon

**Ground Clips :** Brass-Plated

**Grounding Screw :** Brass 8-32

**Line Contacts :** Brass Triple-  
Wipe .031 Thick

**Strap Material :** Zinc-Plated  
Steel

**Terminal Screws :** Brass 10-32

### Mechanical Specifications

### Product Features

**Product ID :** Ratings are permanently marked on device

**Screw Terminal Torque :** 14-18 in-lbs

**Terminal Accom. :** 14-10 AWG

**Terminal ID :** Brass-Hot, Green-Ground, Silver-Neutral

**Termination :** Side Wire

**Color :** Brown

**Device Type :** Duplex Receptacle Outlet

**Feature 3 :** Dual Voltage

**Feature 4 :** Indented Face

**Grade :** Commercial Specification Grade

**Grounding :** Self-Grounding

**NEMA :** 5-20R\_6-20R

**Termination :** Side Wire

Standards and Certifications

**ANSI :** C-73

**CSA C22.2 No. 42 :** File 152105

**NEMA :** WD-2 WD-6

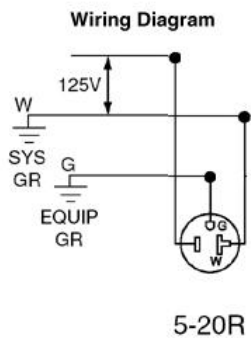
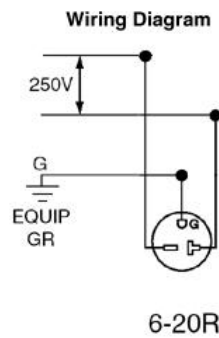
**NOM :** 057

**UL Fed Spec WC-596 :** File E13399

**UL498 :** File E13399

**Warranty :** 10-Year Limited

Wiring Diagram



SPECIFICATION SUBMITTAL

JOB NAME:

JOB NUMBER:

CATALOG NUMBERS:

--	--	--

**Leviton Manufacturing Co., Inc**

201 North Service Road, Melville, NY 11747

Telephone: +1-800-323-8920 · FAX: +1-800-832-9538 · Tech Line (8:30AM-7:30PM E.S.  
T. Monday-Friday): +1-800-824-3005

**Leviton Manufacturing of Canada, Ltd.**

165 Hymus Boulevard, Pointe Claire, Quebec H9R 1E9 · Telephone: +1-800-469-7890 ·  
FAX: +1-800-824-3005 · [www.leviton.com/canada](http://www.leviton.com/canada)

**Leviton S. de R.L. de C.V.**

Lago Tana 43, Mexico DF, Mexico CP 11290 · Tel.: (+52)55-5082-1040 · FAX: (+52)  
5386- 1797 · [www.leviton.com.mx](http://www.leviton.com.mx)

**Visit our Website at: [www.leviton.com](http://www.leviton.com)**

© 2024 Leviton Manufacturing Co., Inc. All Rights Reserved. Subject to change without  
notice.

**Leviton has a global presence.**

If you would like to know where your local Leviton office is located please go to:  
[www.leviton.com/international/contacts](http://www.leviton.com/international/contacts)

**© 2024 Leviton Manufacturing Co., Inc.**