



Color :  Brown

UPC Code : 078477815427

Country Of Origin : United States

NEMA :  5-20R

Available Colors :



CR20

20 Amp Duplex Receptacle/Outlet, Commercial Grade, Self-Grounding

Duplex Receptacle Outlet, Commercial Specification Grade, Indented Face, 20 Amp, 125 Volt, Side Wire, NEMA 5-20R, 2-Pole, 3-Wire, Self-Grounding - Brown

ROHS Compliant : Yes

Leviton's line of Heavy-Duty Specification Grade receptacles are designed and manufactured to withstand the most demanding environments. Available in a wide variety of configurations, including isolated ground, tamper-resistant, etc., these Commercial Grade devices are the electrical contractor's choice for use in hotels, schools, hospitals and commercial office buildings.

Technical Information

AC Horsepower Ratings

At Rated Voltage : 1 HP

Electrical Specifications

Amperage : 20 A

Current Limiting : Full Rated Current

Dielectric Voltage :
Withstands 2000V per UL498

Grounding : Self-Grounding

Pole : 2

Temperature Rise : Max 30C
after 100 cycles OL at 150
percent rated current

Voltage : 125 VAC

Wire : 3

Environmental Specifications

Flammability : Rated V-2 per
UL94

Operating Temperature : -40°
C to 60°C

Material Specifications

Body Material : Thermoplastic

Face Material : Thermoplastic

Ground Clips : Brass

Grounding Screw : Steel 8-32

Line Contacts : Brass .031
Thick

Strap Material : Zinc-Plated
Steel

Terminal Screws : Steel 8-32

Mechanical Specifications

Product ID : Ratings are
permanently marked on device

Product Features

Color : Brown

Screw Terminal Torque : 14-18 in-lbs

Device Type : Duplex Receptacle Outlet

Terminal Accom. : 14-10 AWG

Feature 4 : Indented Face

Terminal ID : Brass-Hot, Green-Ground, Silver-Neutral

Grade : Commercial Specification Grade

Termination : Side Wire

NEMA : 5-20R

Standards and Certifications

ANSI : C-73

CSA C22.2 No. 42 : File 152105

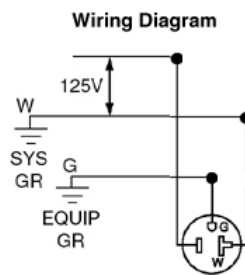
NEMA : WD-1 & WD-6

NOM : 057

UL498 : File E13399

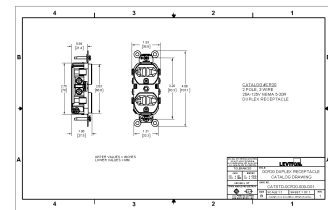
Warranty : 10-Year Limited

Wiring Diagram



5-20R

Dimensional Drawing



SPECIFICATION SUBMITTAL

JOB NAME: <input type="text"/>	CATALOG NUMBERS: <input type="text"/>
JOB NUMBER: <input type="text"/>	<input type="text"/>

Leviton Manufacturing Co., Inc

201 North Service Road, Melville, NY 11747

Telephone: +1-800-323-8920 · FAX: +1-800-832-9538 · Tech Line (8:30AM-7:30PM E.S.

T. Monday-Friday): +1-800-824-3005

Leviton Manufacturing of Canada, Ltd.

165 Hymus Boulevard, Pointe Claire, Quebec H9R 1E9 · Telephone: +1-800-469-7890 ·

FAX: +1-800-824-3005 · www.leviton.com/canada

Leviton S. de R.L. de C.V.

Lago Tana 43, Mexico DF, Mexico CP 11290 · Tel.: (+52)55-5082-1040 · FAX: (+52)

5386- 1797 · www.leviton.com.mx

Visit our Website at: www.leviton.com

© 2024 Leviton Manufacturing Co., Inc. All Rights Reserved. Subject to change without notice.

Leviton has a global presence.

If you would like to know where your local Leviton office is located please go to:

www.leviton.com/international/contacts

© 2024 Leviton Manufacturing Co., Inc.