

Structured Cabling Systems

T-700

Multimedia
solutions
for copper
and fiber
connectivity.

PERFORMANCE PATCH CORDS

[A-C] Leviton's eXtreme™ 6+, GigaMax™ 5e and Category 5 patch cords meet or exceed industry standard specifications, and use compliant stranded wire as specified by the latest published TIA guidelines to ensure adequate 'flex life.' All have quality construction to maintain the integrity of signal transmission at the cross-connect, which is critical to the performance of the entire cabling system.

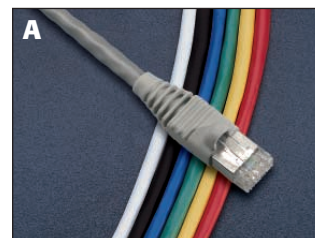
GigaMax 5e Patch Cords are suitable for Category 5e and 5e+ applications, and eXtreme 6+ Patch Cords are suitable for Category 6 applications. Both GigaMax and eXtreme Cords meet component specifications as outlined in the latest TIA guidelines.

Available in lengths of 3', 5', 7', 10', 15' and 20'. Offered in seven colors: white, red, yellow, green, blue, grey and black. GigaMax 5e cords feature black strain-relief boots, and eXtreme 6+ cords feature stranded cable and color-coordinated slimline boots. Category 5 cords have no strain-relief boot.

NOTE: Leviton Performance Patch Cords are required to qualify for the Leviton Lifetime Warranty on Certified installations.

[A-C] Patch Cords			
Description	[A] eXtreme 6	[B] GigaMax 5e	[C] Category 5
3-foot length	62460-03*	5G455-03*	52455-03*
5-foot length	62460-05*	5G455-05*	52455-05*
7-foot length	62460-07*	5G455-07*	52455-07*
10-foot length	62460-10*	5G455-10*	52455-10*
15-foot length	62460-15*	5G455-15*	52455-15*
20-foot length	62460-20*	5G455-20*	52455-20*

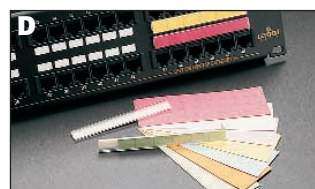
*=Color choices: White(W), Grey(S), Black(E), Blue(L), Red(R), Green(G), Yellow(Y)



RACK & PANEL ACCESSORIES

Patch Panel Port Identification Kits

[D] Patch Panel Port Identification Kits	
Description	Part Number
24-Port ID Kit (for 12-, 24-, 48- and 96-port panels, 24- & 48-port High-Density Panels) (two kits required for 48-port & four kits required for 96-port panels)	49257-I24
QuickPort 32-port ID kit (for 24- and 32-port panels)	49257-QID



Blank Panels

[E, F] Blank Panels (for standard 19" equipment racks)			
Description	1RU	2RU	3RU
[E] Front Blank Panel, Standard	49254-BP1	49254-BP2	49254-BP4
[F] Front Blank Panel, Angled	49254-BA1	49254-BA2	



Hinged Wall-Mount Brackets

[G] Hinged Wall-Mount Brackets			
Description	2RU	3RU	4RU
Hinged Wall-Mount Bracket	49251-W62	49251-W63	49251-W64

