

Product data sheet

Specifications

SQUARE D

Green Premium™



Safety switch, heavy duty, non fusible, 100A, 3 wire, 3 pole, 100HP, 600V AC/DC, NEMA 1

HU363

⚠ Discontinued on: Jan 31, 2024

⚠ Discontinued

Product availability: Stock - Normally stocked in distribution facility

Main

Product	Single Throw Safety Switch
Duty Rating	Heavy duty
Device Application	Heavy application
Disconnect Type	Non-fusible disconnect
Factory Installed Neutral	None
Phase	3 phase
Number Of Poles	3
Current Rating	100 A
Voltage Rating	600 V AC/DC
Enclosure Rating	NEMA 1 steel
Motor Power Hp	20 hp at 240 V AC 50-60 Hz for 1 phase motors 40 hp at 240 V AC 50-60 Hz for 3 phase motors 40 hp at 480 V AC 50-60 Hz for 1 phase motors 75 hp at 480 V AC 50-60 Hz for 3 phase motors 40 hp at 600 V AC 50-60 Hz for 1 phase motors 100 hp at 600 V AC 50-60 Hz for 3 phase motors 20 hp at 250 V DC 50 hp at 600 V DC

Complementary

Mounting Type	Surface
Electrical Connection	Lugs
Wiring Configuration	3-wire
Wire Size	AWG 12...AWG 1/0 aluminium AWG 14...AWG 1/0 copper
Tightening Torque	50 lbf.in (5.65 N.m) (AWG 1...AWG 3/0) 45 lbf.in (5.08 N.m) (AWG 6...AWG 4) 40 lbf.in (4.52 N.m) 0.01 in² (8.367 mm²) (AWG 8) 35 lbf.in (3.95 N.m) 0.00...0.01 in² (2.06...5.261 mm²) (AWG 14...AWG 10)
Depth	6.38 in (162.05 mm)
Width	10.25 in (260.35 mm)
Height	21.25 in (539.75 mm)
Net Weight	17.64 lb(US) (8 kg)

Environment

Price is "List Price" and may be subject to a trade discount – check with your local distributor or retailer for actual price.

Disclaimer: This documentation is not intended as a substitute for and is not to be used for determining suitability or reliability of these products for specific user applications

Certifications	UL listed file E2875
----------------	----------------------

Ordering and shipping details

Category	US10DE100008
Discount Schedule	0DE1
Gtin	785901505846
Returnability	Yes
Country Of Origin	US

Packing Units

Unit Type Of Package 1	PCE
Number Of Units In Package 1	1
Package 1 Height	7.40 in (18.796 cm)
Package 1 Width	10.70 in (27.178 cm)
Package 1 Length	23.40 in (59.436 cm)
Package 1 Weight	16.60 lb(US) (7.53 kg)
Unit Type Of Package 2	PAL
Number Of Units In Package 2	40
Package 2 Height	39.80 in (101.092 cm)
Package 2 Width	40.00 in (101.6 cm)
Package 2 Length	48.00 in (121.92 cm)
Package 2 Weight	688.00 lb(US) (312.071 kg)

Contractual warranty

Warranty	18 months
----------	-----------

Sustainability



Green Premium™ label is Schneider Electric’s commitment to delivering products with best-in-class environmental performance. Green Premium promises compliance with the latest regulations, transparency on environmental impacts, as well as circular and low-CO₂ products.

Guide to assessing product sustainability is a white paper that clarifies global eco-label standards and how to interpret environmental declarations.

[Learn more about Green Premium >](#)

[Guide to assess a product’s sustainability >](#)



Transparency RoHS/REACH

Well-being performance

✓ Mercury Free

✓ Rohs Exemption Information [Yes](#)

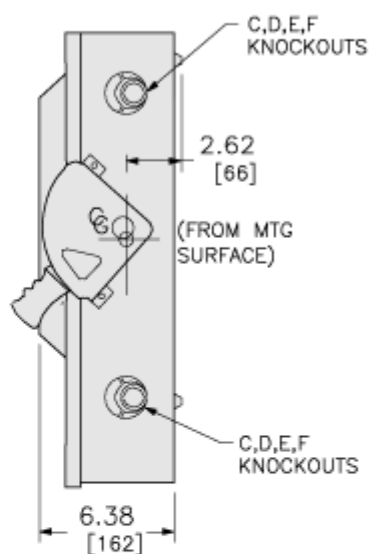
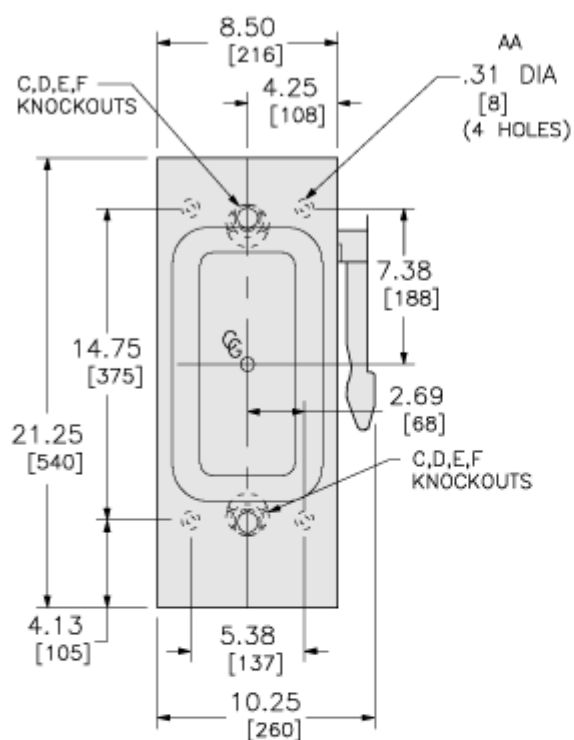
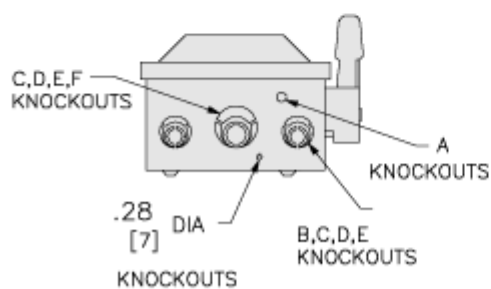
✓ Pvc Free

Certifications & Standards

Reach Regulation	REACH Declaration
Eu Rohs Directive	Compliant with Exemptions
China Rohs Regulation	China RoHS declaration Product out of China RoHS scope. Substance declaration for your information.
Environmental Disclosure	Product Environmental Profile
Weee	The product must be disposed on European Union markets following specific waste collection and never end up in rubbish bins.
Circularity Profile	No need of specific recycling operations
California Proposition 65	WARNING: This product can expose you to chemicals including: Lead and lead compounds, which is known to the State of California to cause cancer and birth defects or other reproductive harm. For more information go to www.P65Warnings.ca.gov

Dimensions Drawings

Approximate Dimensions

in.
[mm]

KNOCKOUTS				
SYMBOL	CONDUIT SIZE		DIAMETER	
	IN	MM	IN	MM
A	.50	13	.88	22
B	.75	19	1.13	29
C	1.00	25	1.38	35
D	1.25	32	1.75	45
E	1.50	38	2.00	51
F	2.00	51	2.50	64