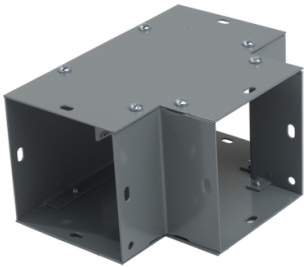


# Product data sheet

Specifications

SQUARE D



Wireway, Square-Duct, 4 inch by 4 inch, tee, N1 paint, NEMA 1

LDB4T

Product availability: Stock - Normally stocked in distribution facility

Price\*: 75.00 USD

## Main

|                  |                  |
|------------------|------------------|
| Range            | SQUARE-Duct      |
| Product Type     | Tee              |
| Cross Section    | 4 x 4 in         |
| Enclosure Rating | NEMA 1           |
| Certifications   | CSA<br>UL Listed |

## Ordering and shipping details

|                   |              |
|-------------------|--------------|
| Category          | US10PE901421 |
| Discount Schedule | 0PE9         |
| Gtin              | 785901199830 |
| Returnability     | No           |
| Country Of Origin | MX           |

## Packing Units

|                              |                        |
|------------------------------|------------------------|
| Unit Type Of Package 1       | PCE                    |
| Number Of Units In Package 1 | 1                      |
| Package 1 Height             | 5.80 in (14.732 cm)    |
| Package 1 Width              | 8.30 in (21.082 cm)    |
| Package 1 Length             | 8.30 in (21.082 cm)    |
| Package 1 Weight             | 2.85 lb(US) (1.293 kg) |

## Contractual warranty

|          |           |
|----------|-----------|
| Warranty | 18 months |
|----------|-----------|

Price is "List Price" and may be subject to a trade discount – check with your local distributor or retailer for actual price.

## Sustainability

**Green Premium™ label** is Schneider Electric’s commitment to delivering products with best-in-class environmental performance. Green Premium promises compliance with the latest regulations, transparency on environmental impacts, as well as circular and low-CO<sub>2</sub> products.

**Guide to assessing product sustainability** is a white paper that clarifies global eco-label standards and how to interpret environmental declarations.

[Learn more about Green Premium >](#)

[Guide to assess a product’s sustainability >](#)

## Well-being performance

|                       |                            |   |
|-----------------------|----------------------------|---|
| ✓                     | Reach Free Of Svhc         |   |
| ✓                     | Toxic Heavy Metal Free     |   |
| ✓                     | Mercury Free               |   |
| ✓                     | Rohs Exemption Information | Yes   |
|                       |                            |   |
| Eu Rohs Directive     |                            | Pro-active compliance (Product out of EU RoHS legal scope)<br><a href="#">EU RoHS Declaration</a>           |
|                       |                            |   |
| China Rohs Regulation |                            | <a href="#">China RoHS declaration</a><br>Pro-active China RoHS declaration (out of China RoHS legal scope) |